



# eDbox Programmable M2M Terminal

eDbox is a plug & play Programmable M2M Terminal for connecting equipment to the Internet over GSM/GPRS, PSTN/POTS (V90) and LAN/Ethernet networks. Including all the software and hardware components needed to transfer information remotely, eDbox unleashes the power of M2M for a large range of equipment.

The eDbox connects to any device through one or two RS232 serial ports. Based on standard off-the-shelf components such as the 16-bit DSP, the eDbox provides a reliable solution fitting to external connectivity needs and retrofit applications.

## ▶ TCP/IP Inside    ▶ Customizable    ▶ Cost Effective

Based on the award-winning eDevice TCP/IP stack, the eDbox includes, in addition to standard sockets, an FTP client, an e-mail client and a web server. The server is entirely customizable and the software development kit (SDK) that is supplied with the eDbox allows scripts to be created and embedded in an interpreted language.

Data on Flash Memory or on serial port can be easily downloaded/uploaded from/to a remote FTP server or via email

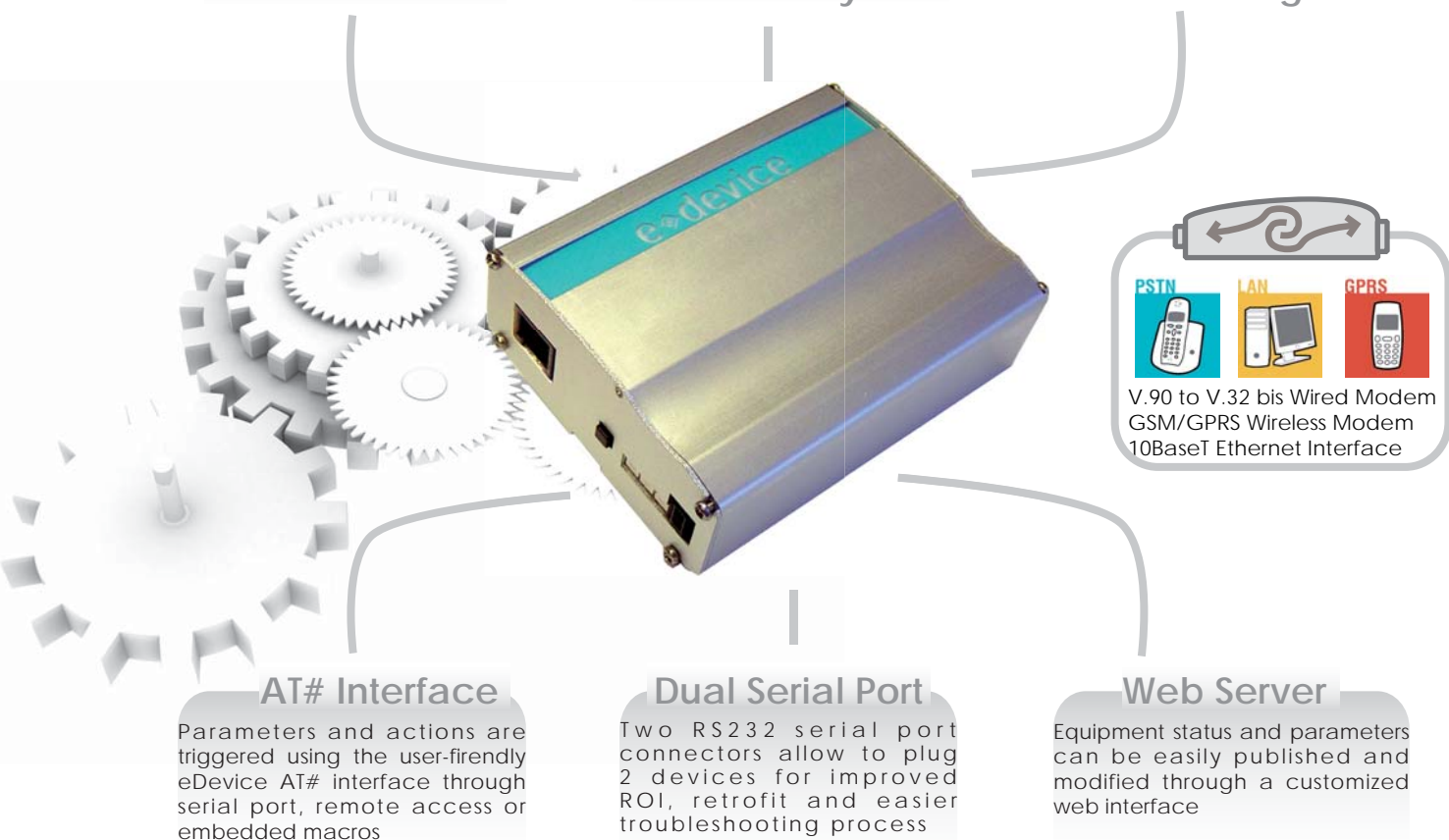
### FTP & Mail Client

The Windows-based SDK allows to easily write, compile and embed user-specific macros into the eDbox with a true Flash FAT

### SDK & File System

Packaged in a robust metal casing or with an off-the-shelf rugged DIN-rail plastic casing (optional)

### Multi-Casing





# eDbox Programmable M2M Terminal

## ▶ Hardware

- ◆ 2187 Analog Devices 16 bit DSP with 16Mbit Flash
- ◆ RS232 serial connection with DB9 plug : primary up to 230Kbps, secondary up to 57 kbps
- ◆ Power Input 5 to 30 VDC with Microfit connector
- ◆ Operating Environment : 0°C to + 50°C
- ◆ Dimensions (L x W x H mm)  
- 95 x 72 x 32 (metal casing)  
- 95 x 70 x 58 (DIN-rail casing)

## ▶ Software

- ◆ Integrated tiny OS for running customer macros to manage connections, I/Os status, application logic, processing of data from serial port, data storage, and more
- ◆ Macros are coded in a script-like and very intuitive language compiled with a Windows SDK and stored locally or remotely in Flash memory

## ▶ Network

- ◆ In-house RFC Compliant TCP/IP stack driven by standard eDevice AT# interface
- ◆ DynamicDNS & NTP Client
- ◆ TCP Socket Client and Server for Telnet connections
- ◆ SMTP and POP3 Client for email transfer
- ◆ FTP Client for file transfer from/to a remote FTP Server
- ◆ Dynamic embedded HTTP Web server

The eDbox is IDeMS-certified, allowing connectivity to IDeMS, eDevice's Middleware Server, to benefit from advanced Fleet Management services and from Network Services, eliminating certain network limitations (e.g. private and dynamic IP addressing) and optimising billed data traffic (GPRS).



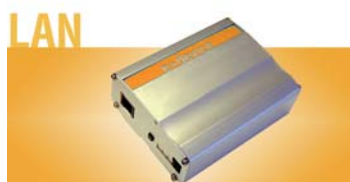
### eDbox 100

with PSTN/POTS internet modem



### eDbox 200

with LAN internet interface



### eDbox 300

with GPRS internet modem



#### Analogue Telephone Networks

The eDbox100 does not require a dedicated PSTN line and can be connected to an existing line through its RJ11 connector. The eDbox100 includes a V.32bis to V.90 modem, CallerID (V23, Bell202), V42, standard AT command set and PPP client.

#### Ethernet Networks

The eDbox200 connects to a 10 Mbit Ethernet port just like a PC would (RJ45 connector). The eDbox200 includes a DHCP client and a RARP server. It provides a permanent and immediate Internet access to your equipment.

#### Cellular Mobile Networks

The eDbox300 uses a dedicated GPRS subscription activated once the SIM card is inserted and the antenna plugged on the FME connector. The eDbox300 manages permanent GPRS attachment to offer immediate wireless access.



**Optional  
Din-Rail Casing**

www.edevice.com  
+33 . 5 . 56 . 127 . 777

eDevice SA  
Parc Cadéra Sud - Bat P2  
Avenue Ariane  
33700 MERIGNAC - FRANCE